

L10D03: ITEM PROFILE

7 QUART CAST IRON DUTCH OVEN



	weight	length	width	height	cubic feet	UPC	
L10D03 7 Quart Cast Iron Dutch Oven, with spiral bail handle							
item	19 LB	13.75 L	13.75 W	5.63 H	0.62 FT ³	075536-36120-8	
case	19 LB	13.75 L	13.75 W	5.63 H	0.62 FT ³	1-00-75536-36120-5	1 PACK
HTS	7323.91.0000		Hi/Ti	6/9	8.31 BASE	12 x 11.68 RIM	4.87 HEIGHT

DESCRIPTION

QUICK DESCRIPTION

7 Quart Seasoned Cast Iron Dutch Oven with spiral bail handle and cast iron cover

DETAILED DESCRIPTION

The 7 qt Lodge traditional Dutch Oven with wire bail handle has been popular for over a century and is perfect for camp and hearth cooking. It conducts heat evenly with no hot spots and maintains heat for efficiency and cooking control. It's seasoned with vegetable oil and ready to use right out of the box.

MADE IN THE USA



[click image for product specs](#)



LODGE MANUFACTURING CO.

PO BOX 380
SOUTH PITTSBURG,
TENNESSEE 37380

423-837-7181
INFO@LODGEFG.COM
ORDERS@LODGEFG.COM

12/16/16

ITEM DETAILS

FEATURES

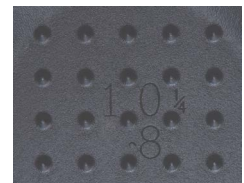
- Seasoned with oil for a natural, easy-release finish that improves with use
- Easy care: hand wash, dry, rub with cooking oil
- The right tool to sear, sauté, simmer, bake, broil, braise, roast, fry or grill
- At home in the oven, on the stove, on the grill or over the campfire
- Great for induction cooktops
- Brutally tough for decades of cooking
- Unparalleled in heat retention and even heating
- Cast iron cover features self-basting tips

NOTES:

Foundry seasoned cast iron, with wire bail handle. Full color carton, in English, Spanish and French, with use & care booklet.

AVAILABLE IMAGES

[Click here for photos.](#)



self-basting tips



[Click the tab for more info](#)

[General Category](#)

[Use & Care](#)

[Lodge History](#)