

L2SP3: ITEM PROFILE

2 QUART CAST IRON SERVING POT



	weight	length	width	height	cubic feet	UPC	
L2SP3 2 Quart Cast Iron Serving Pot, with loop handles							
item	7 LB	8.43 L	8.63 W	3.31 H	0.139 FT ³	075536-36080-5	
case	7 LB	8.43 L	8.63 W	3.31 H	0.139 FT ³	1-00-75536-36080-2	1 PACK
HTS	7323.91.0000		Hi/Ti	7/20		5.25 BASE	7.81 RIM 2.93 HEIGHT

DESCRIPTION

QUICK DESCRIPTION

2 Quart Seasoned Cast Iron Serving Pot with loop handles and cast iron cover

DETAILED DESCRIPTION

Lodge 2 qt cast iron serving pot with loop handles and iron cover is perfect for vegetables and sides, soup for two or baking bread.

MADE IN THE USA



[click image for product specs](#)



ITEM DETAILS

FEATURES

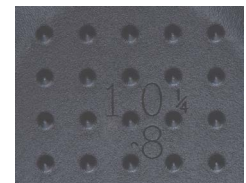
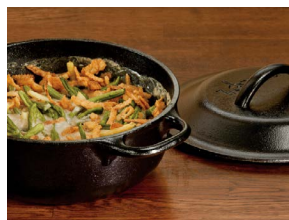
- Seasoned with oil for a natural, easy-release finish that improves with use
- Easy care: hand wash, dry, rub with cooking oil
- The right tool to sear, sauté, simmer, bake, broil, braise, roast, fry or grill
- At home in the oven, on the stove, on the grill or over the campfire
- Great for induction cooktops
- Brutally tough for decades of cooking
- Unparalleled in heat retention and even heating
- Cast iron cover features self-basting tips
- Loop handles make it easy to move from stovetop to oven

NOTES:

Foundry seasoned cast iron. Full color carton, in English, Spanish and French, with use & care booklet.

AVAILABLE IMAGES

[Click here for photos.](#)



self-basting tips

LODGE MANUFACTURING CO.

PO BOX 380
SOUTH PITTSBURG,
TENNESSEE 37380

423-837-7181
INFO@LODGEFG.COM
ORDERS@LODGEFG.COM

07/20/17



[Click the tab for more info](#)

[General Category](#)

[Use & Care](#)

[Lodge History](#)